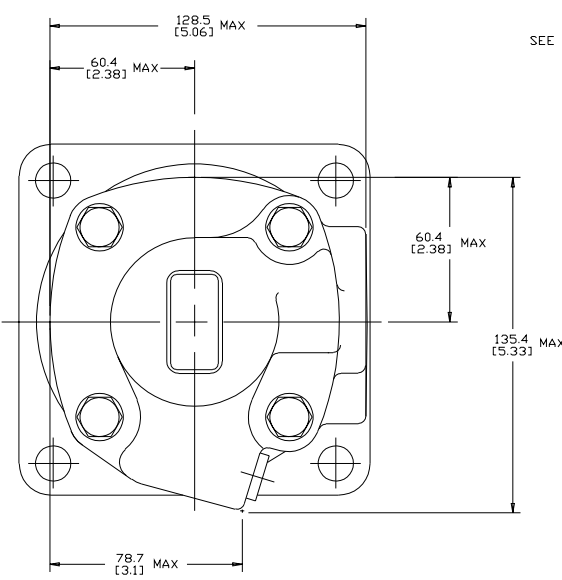


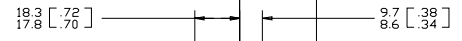
SYM	REVISION	BY	DATE	ECN
A	RELEASE FOR SAMPLES AND ESTIMATE	GA	1-29-91	X5116
H	(5)REVISED PICTORIALY	VVB	8-16-06	M66511
J	(7)MOUNTING TYPE WAS "H"	AMM	1-24-07	0002527
K	REVISED FOR DETAILS OF CHANGES REFER ECR ATTACHMENT	PRK	9-21-09	M76013
L	ADDED NOTE (3)	SMT	11-19-12	M87527



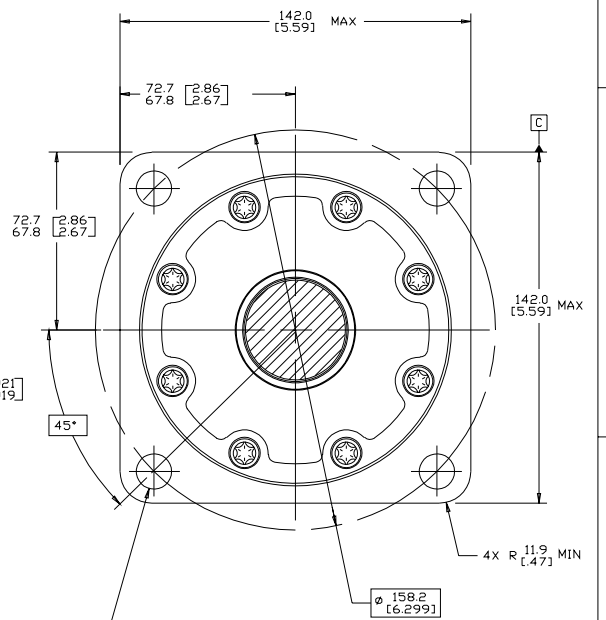
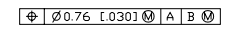
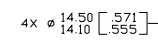
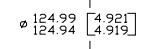
SEE PORT INSTALLATION

PORT A

PORT B



SEE SHAFT INSTALLATION



NOTE
 1. ROTATION:
 STANDARD; WHEN FACING SHAFT END OF MOTOR, SHAFT TO ROTATE;
 CLOCKWISE WHEN PORT "A" IS PRESSURIZED
 COUNTERCLOCKWISE WHEN PORT "B" IS PRESSURIZED
 REVERSE; WHEN FACING SHAFT END OF MOTOR, SHAFT TO ROTATE;
 CLOCKWISE WHEN PORT "B" IS PRESSURIZED
 COUNTERCLOCKWISE WHEN PORT "A" IS PRESSURIZED
 2. MOUNTING TYPE: AH
 STANDARD: ISO FLANGE 125 B4HW (ISO 3019/2)
 124.97 [4.920] PILDT DIA. 14.27 [0.562]
 DIA. HOLES ON 160.00 [6.299] DIA. BOLT CIRCLE

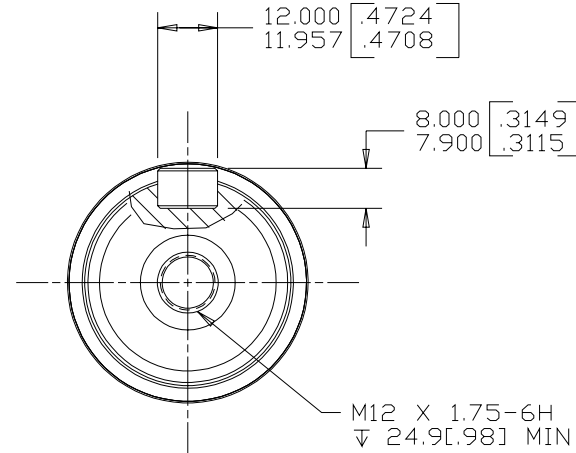
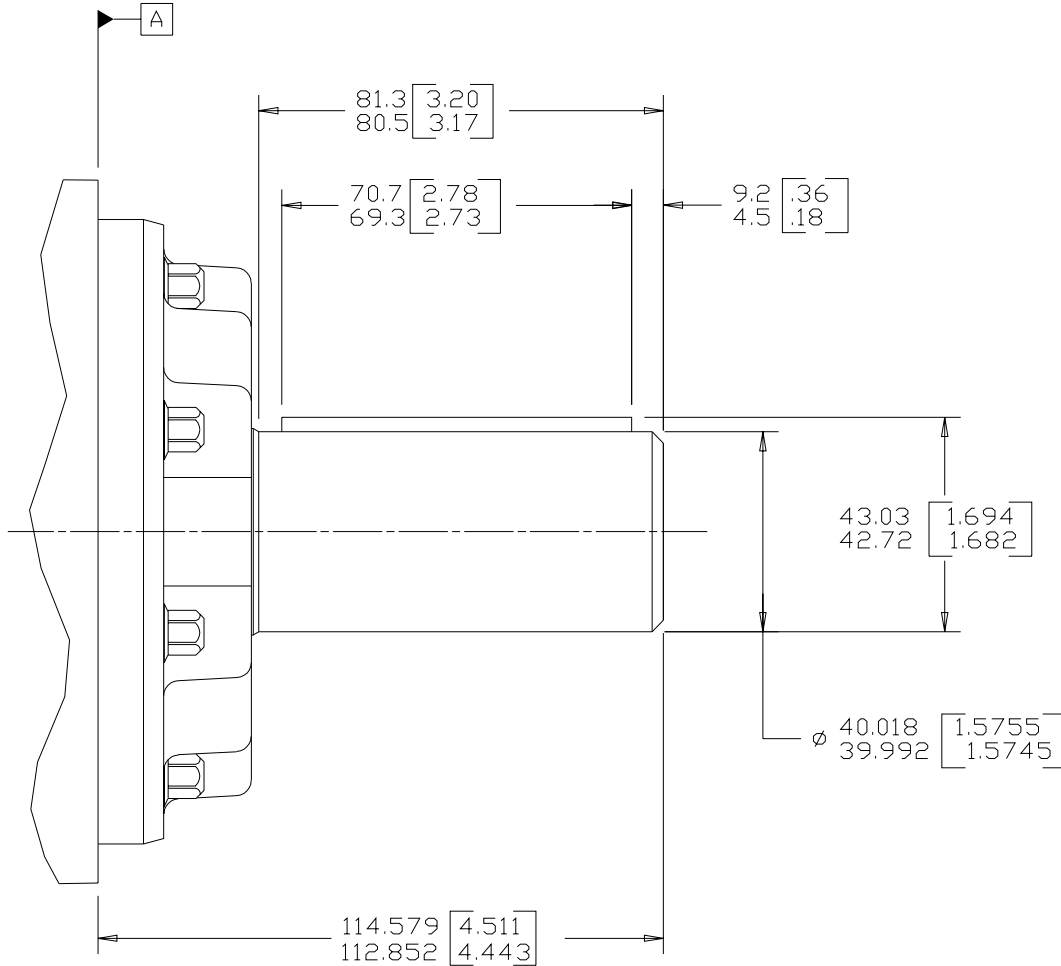
(3) APPLICABLE IF INDICATED ON PART LIST

REVIEWED FOR CLASSIFICATION PER ESP-042

DRAWING BASED ON ASME Y14.5M-1994

UNLESS OTHERWISE SPECIFIED ALL DIMENSIONS ARE IN INCHES <input type="checkbox"/> MILLIMETERS <input checked="" type="checkbox"/>	THE REPRODUCTION, DISTRIBUTION AND UTILIZATION OF THIS DOCUMENT, AS WELL AS THE COMMUNICATION OF ITS CONTENTS TO OTHERS WITHOUT EXPLICIT AUTHORIZATION IS PROHIBITED. OFFENDERS WILL BE HELD LIABLE FOR THE PAYMENT OF DAMAGES. ALL RIGHTS RESERVED IN THE EVENT OF A PATENT, UTILITY MODEL, OR DESIGN. (PER ISO 9000)		
TOLERANCES X ± --- XX + REF XXX + DNLY	DRAWN BY GA 4-12-91 CHECKED BY KJR 7-3-91	MATERIAL/HEAT TREAT	
UNSPECIFIED RADI ARE --- UNPECIFIED DRAFT ANGLES ARE ---	ENGR. BY CK 7-5-91 METALLURGY BY DATE	TITLE 4000 MOTOR INSTALLATION	
DRAWING FORMAT CASE <input type="checkbox"/> MANUAL <input type="checkbox"/>	THIRD ANGLE PROJECTION <input checked="" type="checkbox"/> NOT SCALE	NUMBER A-332-000	
SCALE 1/1		SHEET 1 OF 1	

SYM	REVISION	BY	DATE	ECN
A	RELEASE FOR SAMPLES AND ESTIMATE	G.A	1-29-91 KJR	X5116
B	ENGINEERING RELEASE	MLW	6-27-91 KR	20710
C	REMOVED 30.8 [1.21] MAX AND PICTORIAL CHANGE TO FRONT RETAINER	LMD	12-13-91 LMD	21445
D	REVISED	SDR		22331
E	-1) MOUNTING TYPE WAS "H" -2) OUTPUT SHAFT WAS "14"	AMM	1-24-07	0002527
F	-1) WAS 111.70-114.50[4.390-4.510]	PRK	5-21-09	M76013
G	-1) REVISED AS PER STACK UP-2) UPDATED TO ASME Y14.5-2009 STANDARD	NRI	8-06-14	0058100



REVIEWED FOR CLASSIFICATION PER ESP-042

NOTE

- 1 MOUNTING TYPE: OPTION AH
- 2 OUTPUT SHAFT: OPTION 11

UNLESS OTHERWISE SPECIFIED ALL DIMENSIONS ARE IN INCHES <input type="checkbox"/> MILLIMETERS <input checked="" type="checkbox"/>		DRAWING BASED ON ASME Y14.5-2009	
TOLERANCES x ± ---- xx ± REF xxx ± ONLY ∠ ----		THE REPRODUCTION, DISTRIBUTION, AND UTILIZATION OF THIS DOCUMENT, AS WELL AS THE COMMUNICATION OF ITS CONTENTS TO OTHERS WITHOUT EXPLICIT AUTHORIZATION IS PROHIBITED. OFFENDERS WILL BE HELD LIABLE FOR THE PAYMENT OF DAMAGES. ALL RIGHTS RESERVED IN THE EVENT OF THE GRANT OF A PATENT, UTILITY MODEL, OR DESIGN. (PER ISO 16016)	
UNSPECIFIED RADII ARE		DRAWN BY/DATE G.A 4-17-91	MATERIAL/HEAT TREAT
UNSPECIFIED DRAFT ANGLES ARE		CHECKED BY/DATE KJR 7-9-91	TITLE 4000 SERIES MOTOR SHAFT INSTALLATION
DRAWING FORMAT CADD <input checked="" type="checkbox"/> MANUAL <input type="checkbox"/>		ENGRG BY/DATE GK 7-9-91	
THIRD ANGLE PROJECTION		METALLURGY BY/DATE	SCALE 1/1
DO NOT SCALE		MICROINCHES <input type="checkbox"/> MICROMETERS <input checked="" type="checkbox"/>	SHEET 1 OF 1
ARITHMETICAL AVERAGE <input checked="" type="checkbox"/>			

